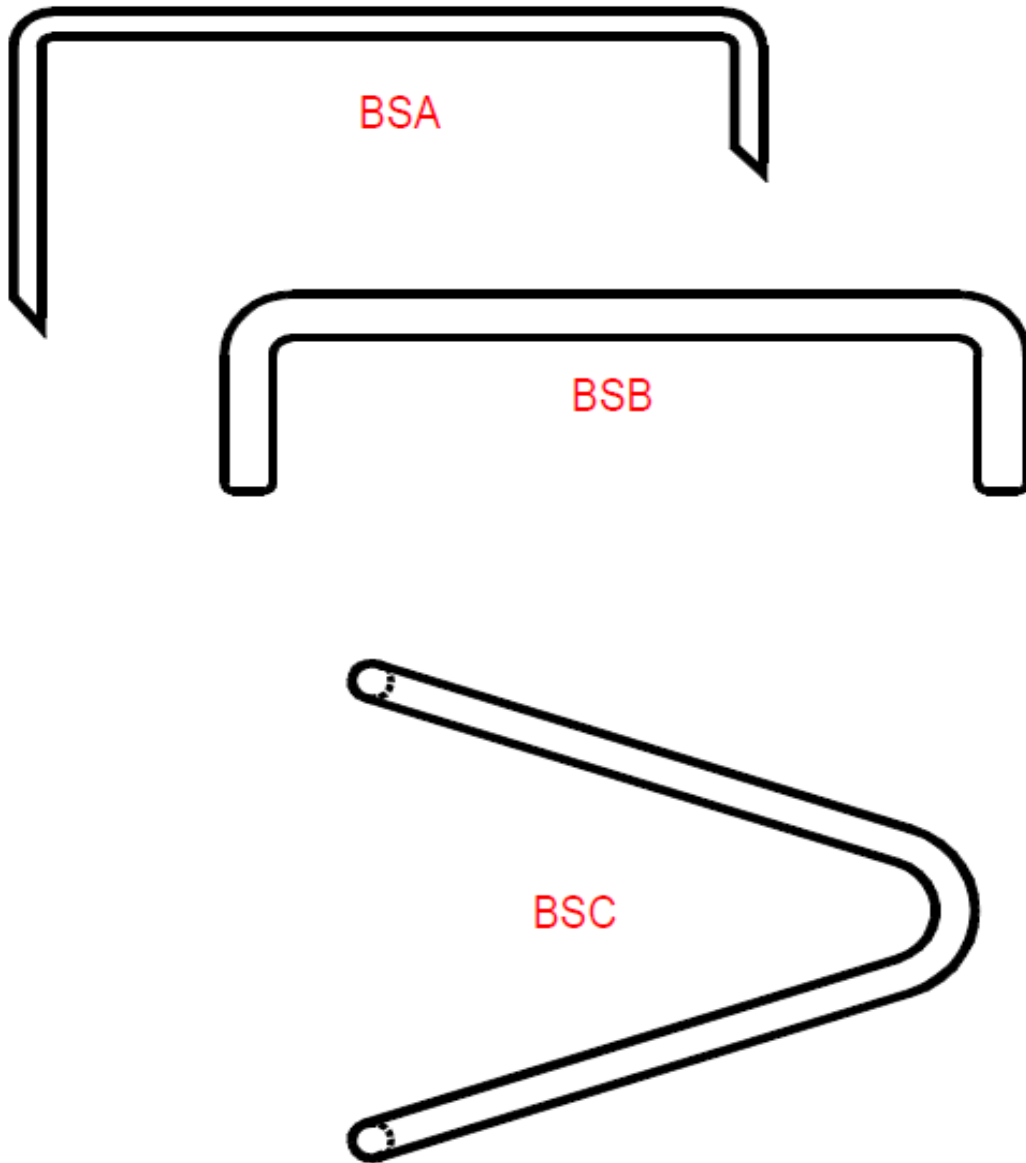


The BASIC anchor for brick linings



Commenced On : 17.1.2014	Drawn by : Tvikon s.r.o.	Product description: <b>BASIC</b>	
<b>Tvikon</b>		This drawing is the property of Tvikon s.r.o. Unauthorized use of patented features and / or and reproduction of this drawing is strictly prohibited.	BRICK SYSTEM
Tvikon s.r.o., U Landronky 1145/42, 169 00 Praha 6, Břevnov, tvikon@tvikon.cz, Phone: +420775908330		Dwg nr. T-14/02	

## The BASIC anchor for brick linings

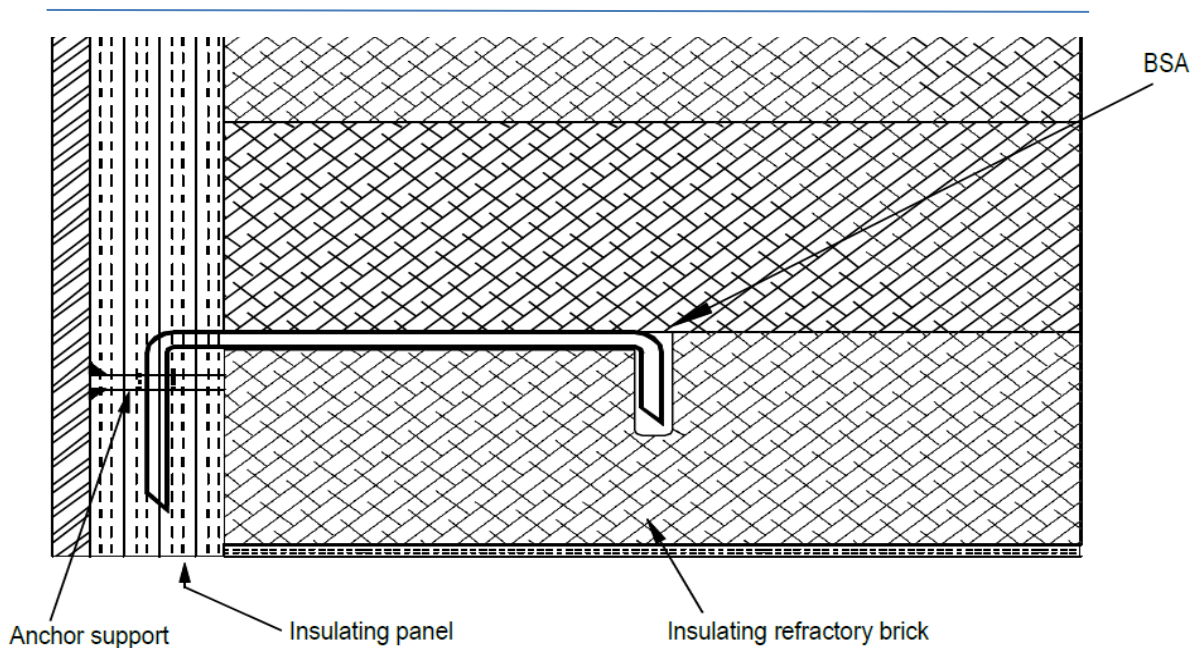
Where large areas of wall are lined by using lightweight refractory bricks, for example in petrochemical furnaces, the lightweight refractory walls must be anchored to prevent bricks falling out. The BS Series provides anchoring systems to satisfy these anchoring requirements. The BS anchors are inserted in the refractory brick and mounted in a mechanism on the steel casing of the plant component.

Three different basic versions are available for this type of anchoring:

**BSA** - This brick hook has two pointed 90° ends angled in the same direction. The short end is knocked into the lightweight refractory brick and the other, longer end is mounted in a lug. It is only possible to knock the anchor in when using lightweight refractory bricks which are suitable for this due to their structure and strength.

**BSB** - The BSB anchor has the same design as the BSA anchor but has no pointed ends. Here a hole is drilled in the brick to accommodate the hook.

**BSC** - The BSC anchor has a somewhat different kind of rear restraint system. The pointed ends of the anchor sit on an angled body. The two pointed ends of the BSC anchor are knocked into the lightweight refractory brick and guided behind a rod-shaped bracket by the angled central element.

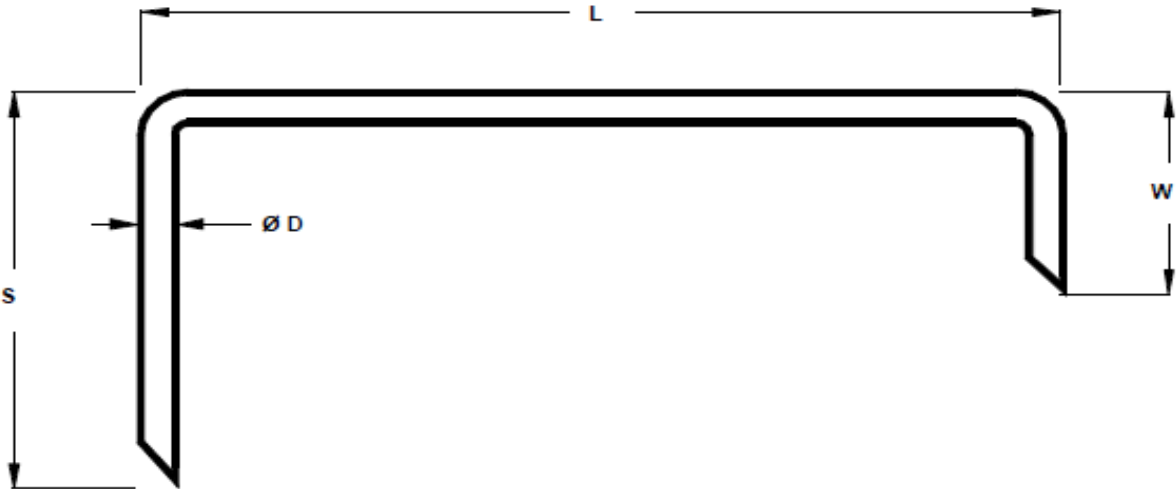
**Tvikon**

Tvikon s.r.o., U Landronky 1145/42, 169 00 Praha 6, Břevnov, tvikon@tvikon.cz, Phone: +420775908330

This drawing is the property of  
Tvikon s.r.o. Unauthorized use of  
patented features and / or and  
reproduction of this drawing is  
strictly prohibited.

BRICK SYSTEM

Dwg nr. T-14/03

<p>Ordering examples and standard alloys available</p>		<p style="text-align: center;"><b>BSA</b></p> <p>D<sub>max</sub> = 12 mm</p> <p>D<sub>min</sub> = 5 mm</p>
<p style="text-align: center;">Example</p> <p style="text-align: center;"><b>BSA.6 - 30/150/60 - 310</b></p> <div style="display: flex; justify-content: space-around; align-items: center;"> <div style="text-align: center;">↑</div> <div style="text-align: center;">↑</div> <div style="text-align: center;">↑</div> <div style="text-align: center;">↑</div> </div> <div style="display: flex; justify-content: space-around; margin-top: 5px;"> <span>Anchor type</span> <span>Diameter</span> <span>Length (WxLxS)</span> <span>Alloy type</span> </div>		
 <p>The drawing shows a U-shaped refractory anchor. The horizontal length is labeled 'L'. The vertical height of the stem is labeled 'S'. The width of the base is labeled 'W'. The diameter of the stem is labeled 'ØD'. The anchor has a hook-like end on the right side.</p>		
<p><b>Tvikon</b></p> <p><small>Tvikon s.r.o., U Landronky 1145/42, 169 00 Praha 6, Břevnov, tvikon@tvikon.cz, Phone: +420775908330</small></p>	<p><small>This drawing is the property of Tvikon s.r.o. Unauthorized use of patented features and / or and reproduction of this drawing is strictly prohibited.</small></p>	<p><b>BRICK SYSTEM</b></p> <p>Dwg nr. T-14/04</p>

<p>Ordering examples and standard alloys available</p>		<p><b>BSB</b></p> <p><math>D_{max} = 12 \text{ mm}</math></p> <p><math>D_{min} = 5 \text{ mm}</math></p>	
<p>Example</p> <p><b>BSB.6 - 50/250/80 - 310</b></p> <p> <span style="margin-right: 40px;">↑</span> <span style="margin-right: 40px;">↑</span> <span style="margin-right: 40px;">↑</span> <span>↑</span> </p> <p>Anchor type   Diameter   Length (WxLxS)   Alloy type</p>			
<p><b>Tvikon</b></p> <p>Tvikon s.r.o., U Landronky 1145/42, 169 00 Praha 6, Břevnov, tvikon@tvikon.cz, Phone: +420775908330</p>		<p>This drawing is the property of Tvikon s.r.o. Unauthorized use of patented features and / or and reproduction of this drawing is strictly prohibited.</p>	<p><b>BRICK SYSTEM</b></p> <p>Dwg nr. T-14/05</p>

Ordering examples and standard alloys available		<h1>BSC</h1> <p>D<sub>max</sub> = 12 mm</p> <p>D<sub>min</sub> = 5 mm</p>
<p>Example</p> <h2>BSC.6 - 50/250/60 - 310</h2> <p style="text-align: center;"> <span style="margin-right: 20px;">↑</span> <span style="margin-right: 20px;">↑</span> <span style="margin-right: 20px;">↑</span> <span>↑</span> </p> <p>Anchor type    Diameter    Length (WxLxS)    Alloy type</p>		
<h1 style="color: red;">Tvikon</h1> <p>Tvikon s.r.o., U Landronky 1145/42, 169 00 Praha 6, Břevnov, tvikon@tvikon.cz, Phone: +420775908330</p>		<p>This drawing is the property of Tvikon s.r.o. Unauthorized use of patented features and / or and reproduction of this drawing is strictly prohibited.</p> <p style="text-align: center;"><b>BRICK SYSTEM</b></p> <p style="text-align: center;">Dwg nr. T-14/06</p>